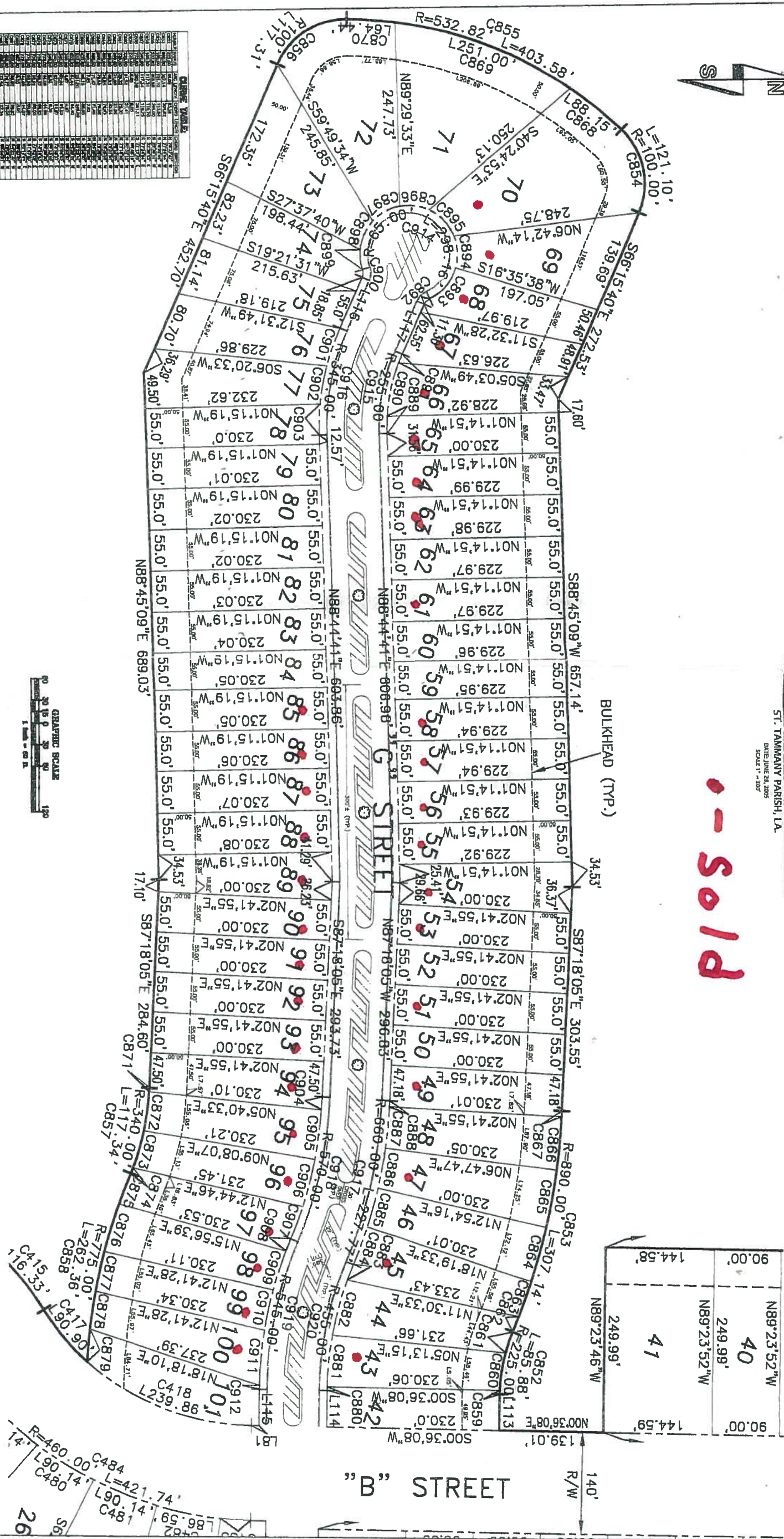


LAKESHORE ESTATES PHASE 2
TAMMANY HOLDING CORPORATION
ST. TAMMANY PARISH, LA.

DATE: JUNE 24, 2005
SCALE: 1" = 30'

Sold

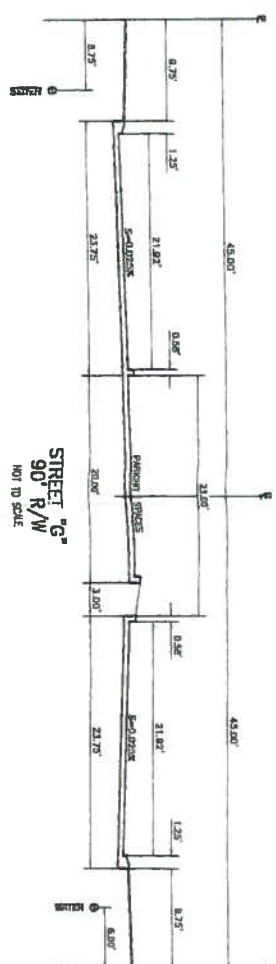


CHANGE TABLE

NO.	DESCRIPTION	DATE
1
2
3
4
5
6
7
8
9
10
11
12
13
14
15
16
17
18
19
20
21
22
23
24
25
26
27
28
29
30
31
32
33
34
35
36
37
38
39
40
41
42
43
44
45
46
47
48
49
50
51
52
53
54
55
56
57
58
59
60
61
62
63
64
65
66
67
68
69
70
71
72
73
74
75
76
77
78
79
80
81
82
83
84
85
86
87
88
89
90
91
92
93
94
95
96
97
98
99
100
101

LINE TABLE

LINE NO.	DESCRIPTION	DATE
1
2
3
4
5
6
7
8
9
10
11
12
13
14
15
16
17
18
19
20
21
22
23
24
25
26
27
28
29
30
31
32
33
34
35
36
37
38
39
40
41
42
43
44
45
46
47
48
49
50
51
52
53
54
55
56
57
58
59
60
61
62
63
64
65
66
67
68
69
70
71
72
73
74
75
76
77
78
79
80
81
82
83
84
85
86
87
88
89
90
91
92
93
94
95
96
97
98
99
100
101



LOTS IN THE VICINITY OF "G" STREET
FINAL PLAT

LAKESHORE ESTATES PHASE 2
IN SECTIONS 34 & 35, T86-R14E
AND IN SECTIONS 1, 2, 3 & 11, T10S-R14E
DISTRICT 13 WARD 9
ST. TAMMANY PARISH, LA.

KEITH LABATTE, LAURENCE CONSULTANTS, INC.
ENGINEERS - PLANNING - SURVEYING - HYDROLOGIST - ENVIRONMENTAL
1000 E. CHANDLER AVENUE SUITE 1, TAMMANY PARISH, LA. 70071 (504) 834-0185
SCALE: 1" = 30'
DATE: DECEMBER 09, 2005
DRAWN BY: PMA, DMP
FILE NO.:
JOB NO.: 494-0175
SHEET NO.: 1 of 1